



**3B9GJ 18<sup>th</sup>**

**6m EME**

**DXpedition**

**and 1<sup>st</sup> with**

**Q65 Pileup**





# 3B9GJ

## 6M EME DXPEDITION

Terre Rouge, Rodrigues Island, Mauritius

Grid MH10RH, IOTA AF-017, CQ DX Zone 39, ITU Zone 53



Sunday morning, August 27, 2023





**Later that  
afternoon**





**Mast on  
Prop and  
Awaiting  
the Yagi**



# Assembling the yagi





# Driven Element and Balun



D1





**D3 and  
the rest**



**Monday Afternoon August 28, 2023  
(antenna ready but winds too high)**





# Placing Yagi on Mast

## Tuesday, August 29, 2023





# Raising Antenna at 3B9GJ

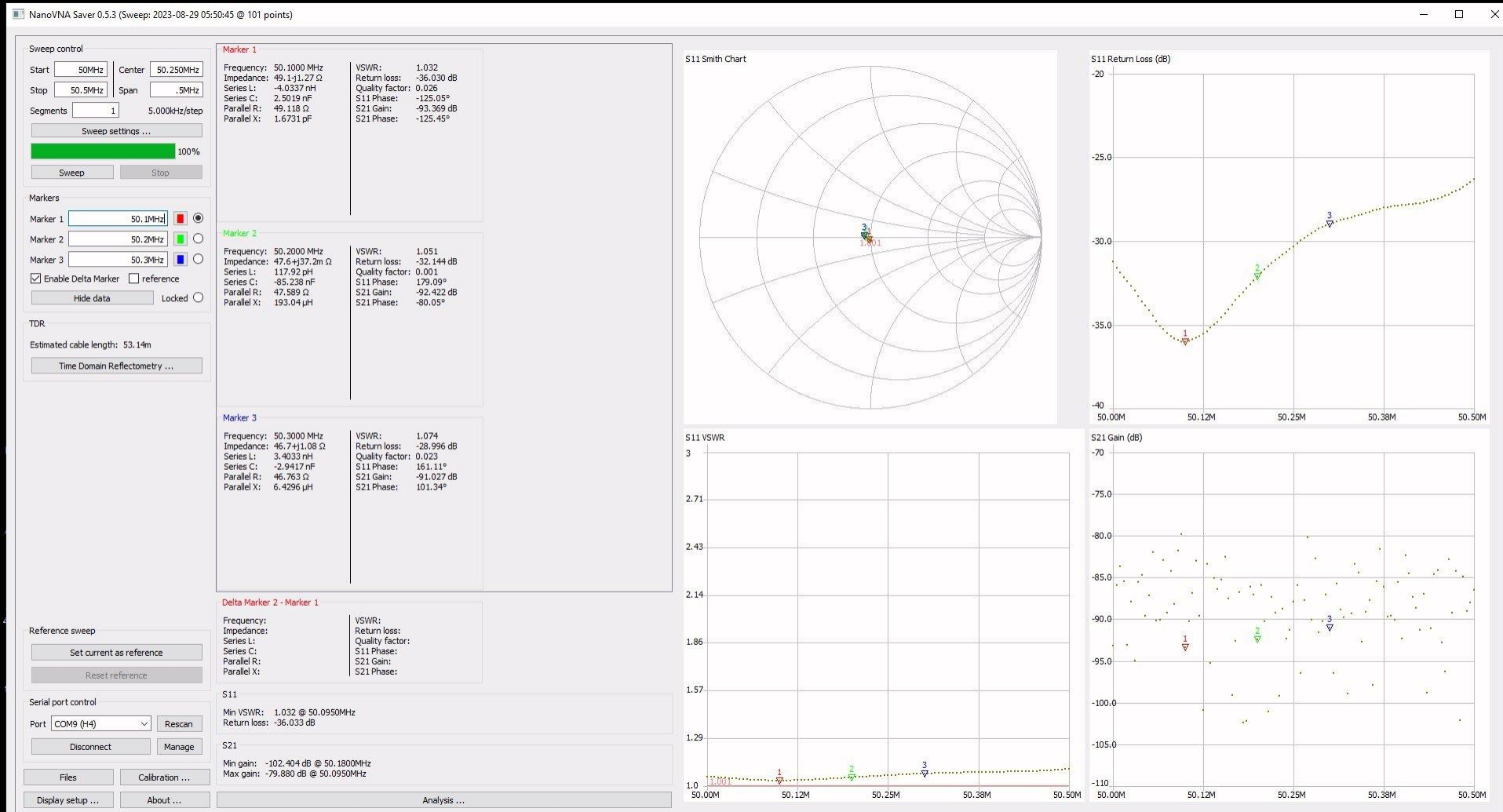




**Up in time  
for first  
moonrise  
Tuesday,  
August 29**

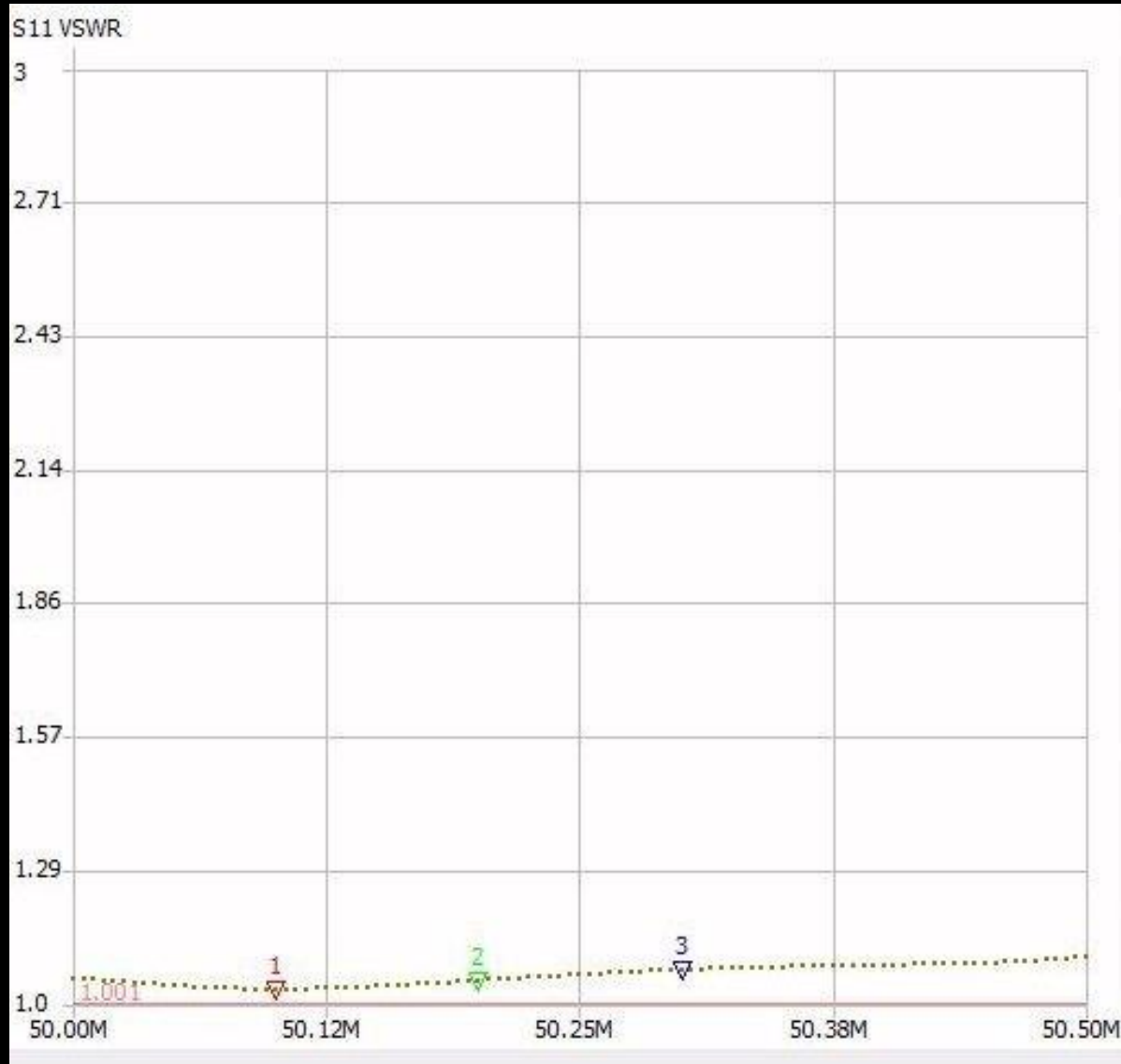


# NanoVNA verifies EF0609GJ yagi is ready for action!





# Match Remained Good During Heavy Rains



**Blue Moon  
rising  
August 30**





**Easterly winds were very strong! Here the antenna is tied down, aimed with the wind.**

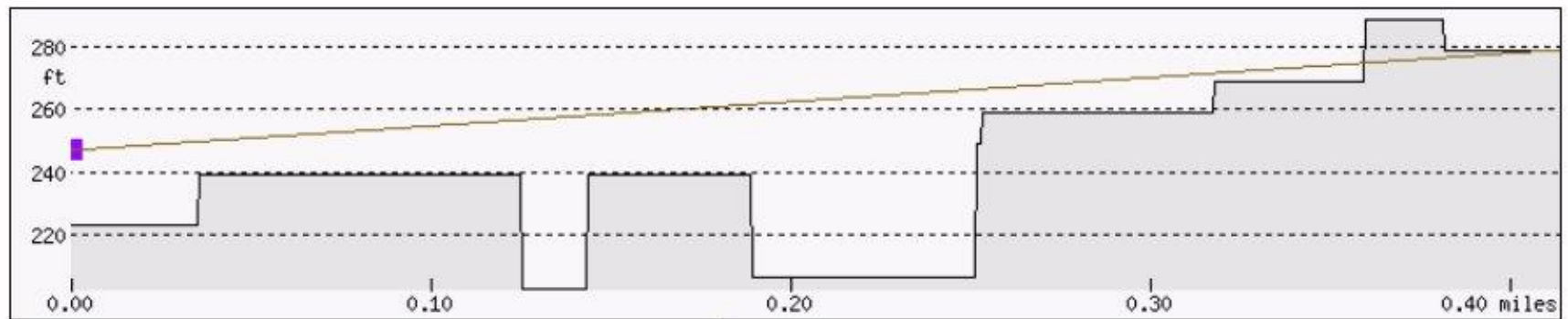
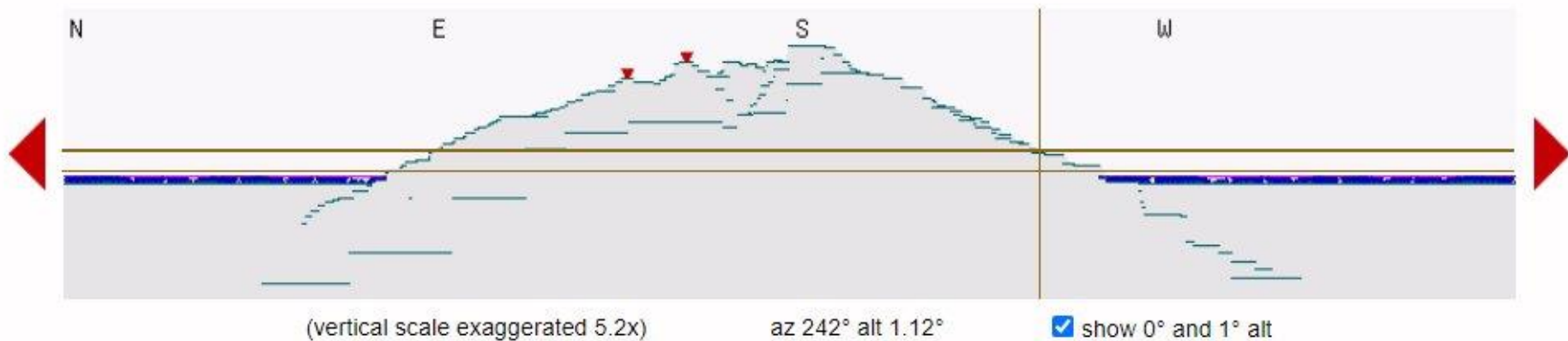


# The Common Moon Problem

- **Stations on opposite side of the Earth have limited windows**
- **Good horizon required both ways**
- **Expect many callers as moon rises for multiple stations at the same time**

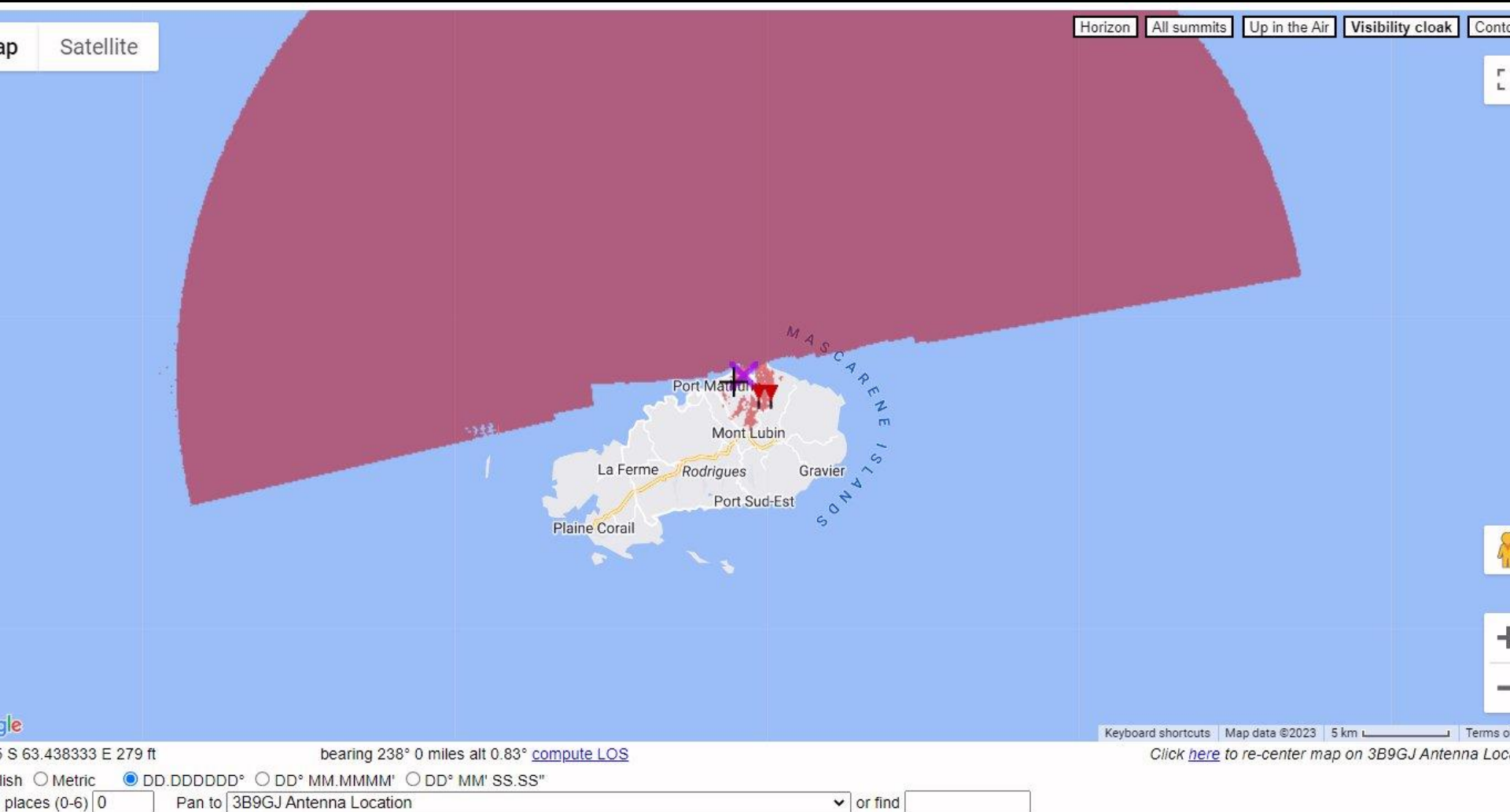


# Horizons from Site Chosen



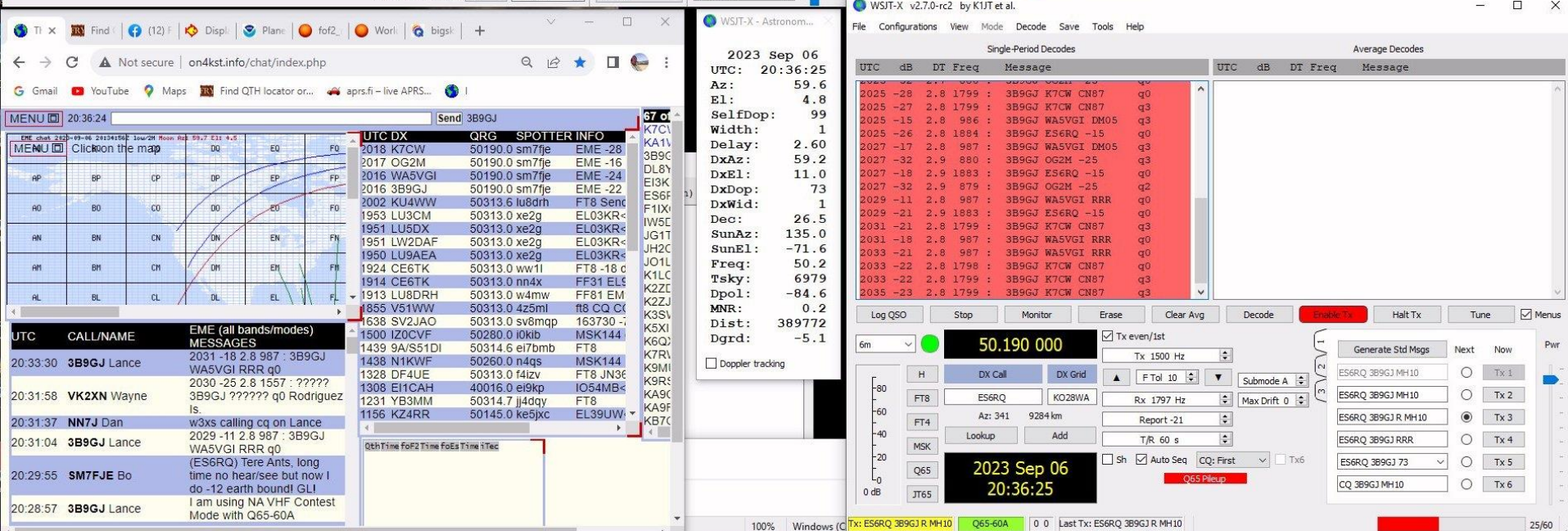
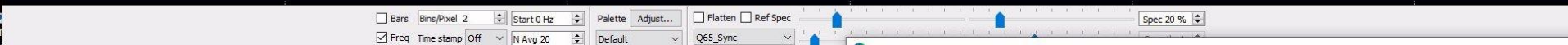
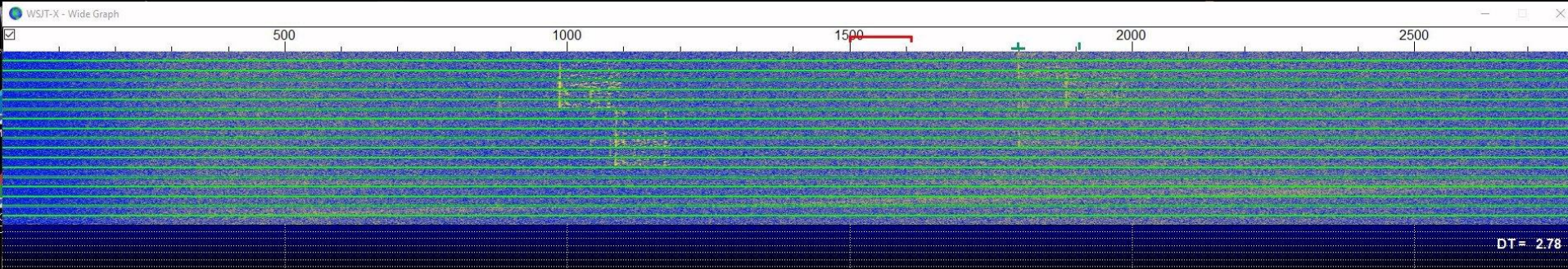
Parameters

# Negative Horizon Over the Ocean





# Final Moonrise September 6





2023 Sep 06  
UTC: 20:36:25  
Az: 59.6  
El: 4.8  
SelfDop: 99  
Width: 1  
Delay: 2.60  
DxAz: 59.2  
DxEI: 11.0  
DxDop: 73  
DxWid: 1  
Dec: 26.5  
SunAz: 135.0  
SunEl: -71.6  
Freq: 50.2  
Tsky: 6979  
Dpol: -84.6  
MNR: 0.2  
Dist: 389772  
Dgrd: -5.1

☐ Doppler tracking

## Single-Period Decodes

UTC	dB	DT	Freq	Message	UTC	dB
2025	-28	2.8	1799	: 3B9GJ K7CW CN87	q0	
2025	-27	2.8	1799	: 3B9GJ K7CW CN87	q3	
2025	-15	2.8	986	: 3B9GJ WA5VGI DM05	q3	
2025	-26	2.8	1884	: 3B9GJ ES6RQ -15	q0	
2027	-17	2.8	987	: 3B9GJ WA5VGI DM05	q3	
2027	-32	2.9	880	: 3B9GJ OG2M -25	q3	
2027	-18	2.9	1883	: 3B9GJ ES6RQ -15	q0	
2027	-32	2.9	879	: 3B9GJ OG2M -25	q2	
2029	-11	2.8	987	: 3B9GJ WA5VGI RRR	q0	
2029	-21	2.9	1883	: 3B9GJ ES6RQ -15	q0	
2031	-21	2.8	1799	: 3B9GJ K7CW CN87	q3	
2031	-18	2.8	987	: 3B9GJ WA5VGI RRR	q0	
2033	-21	2.8	987	: 3B9GJ WA5VGI RRR	q0	
2033	-22	2.8	1798	: 3B9GJ K7CW CN87	q0	
2033	-22	2.8	1799	: 3B9GJ K7CW CN87	q3	
2035	-23	2.8	1799	: 3B9GJ K7CW CN87	q3	

Log QSO

Stop

Monitor

Erase

Clear Avg

Decode

6m

50.190 000

☒ Tx even/1st

Tx 1500 Hz

H

DX Call

DX Grid

FT8

ES6RQ

KO28WA

Rx 1797 Hz

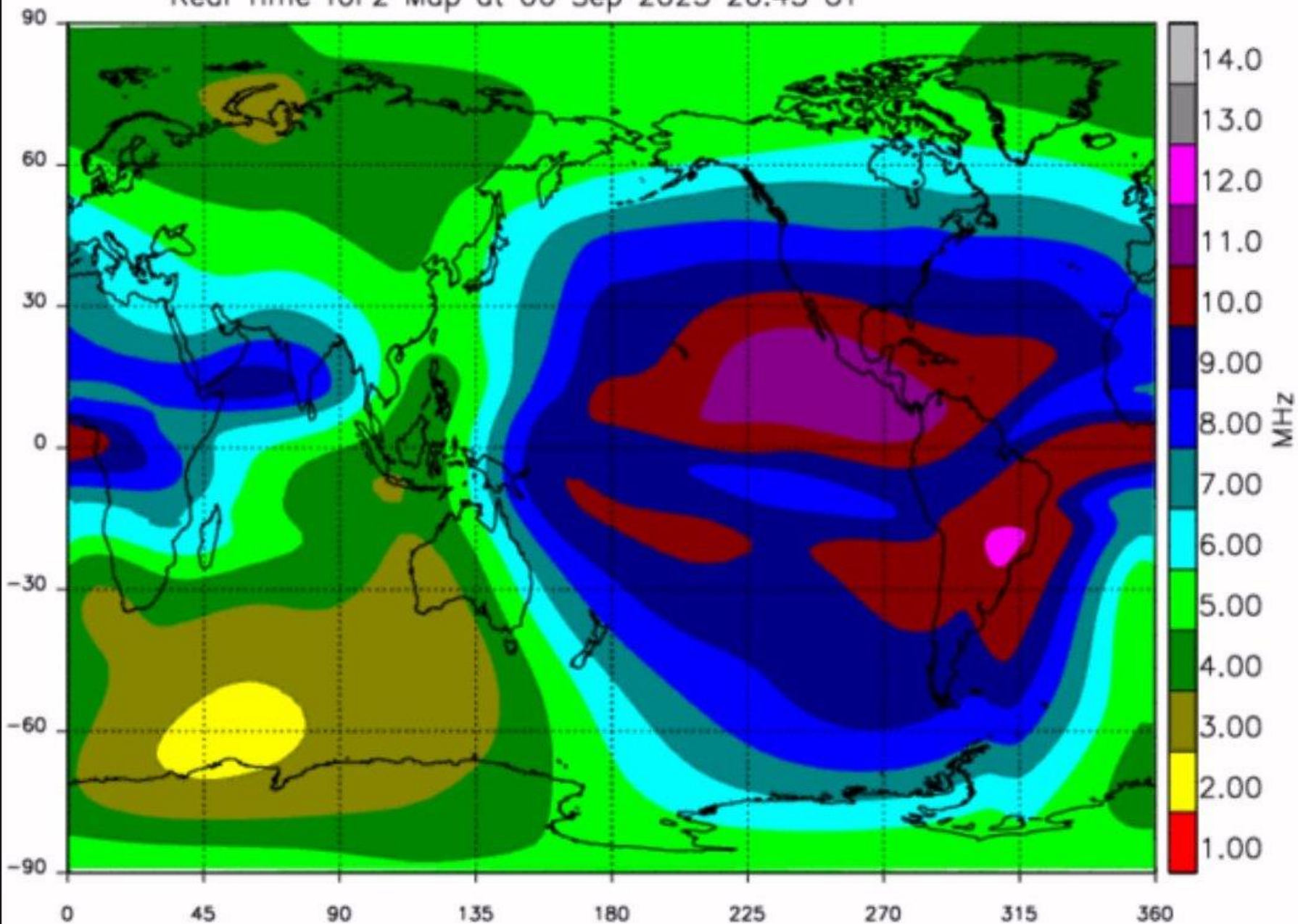
Submod

Max Drif

Az: 341 9284 km



Real Time foF2 Map at 06 Sep 2023 20:45 UT



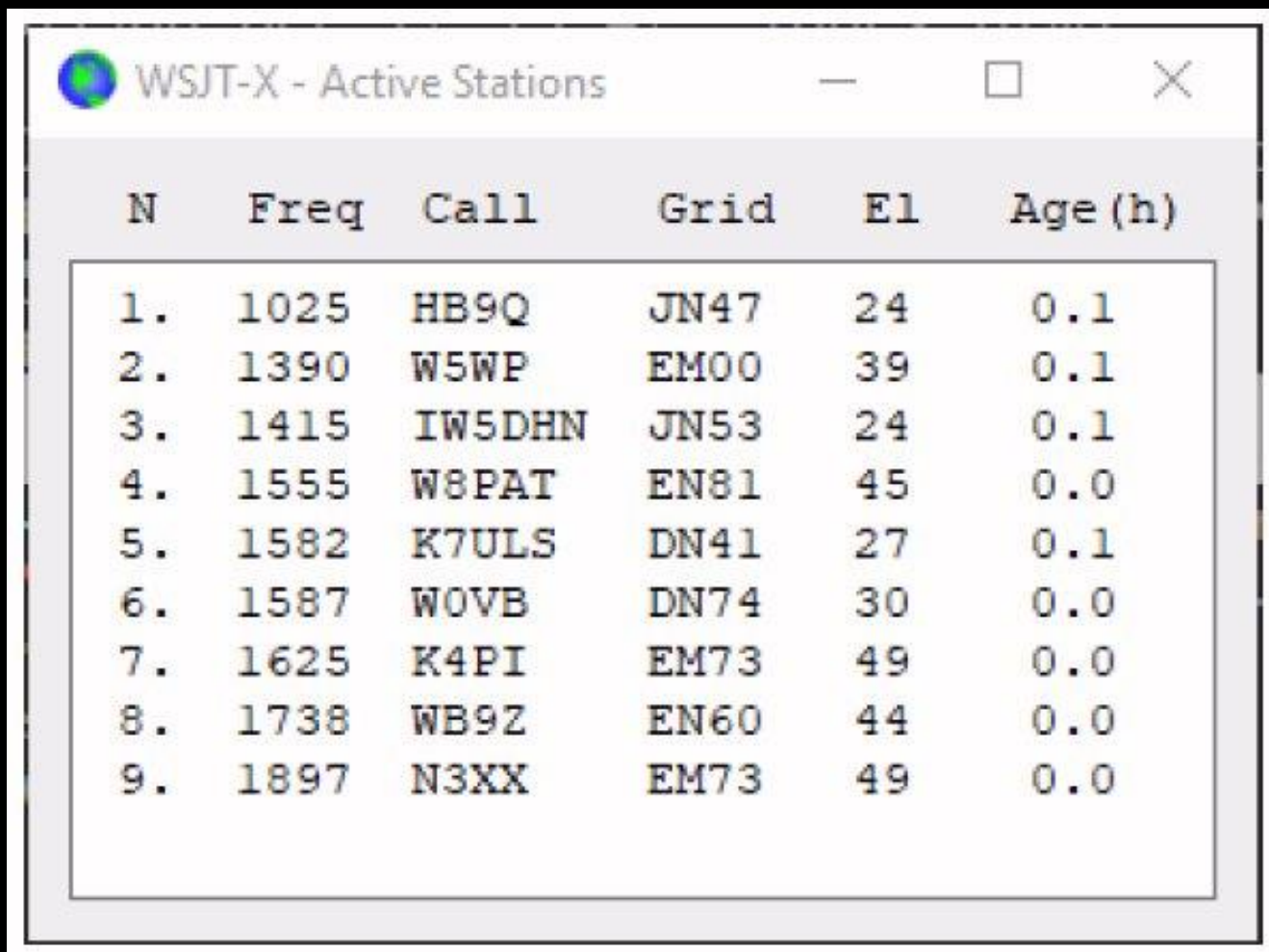
# Q65 Pileup Overview

- Developed to quickly work multiple Q65 callers
- Decoded Callers are added to Active Stations List box
- ASL stations decoded with maximum sensitivity
- Not necessary to have ASL callsigns in the DX CALL box
- Possible to call various stations
- Several times multiple RRR received in the same sequence



# Sample Q65 Pileup

## Active Stations List



The image shows a screenshot of a software window titled "WSJT-X - Active Stations". The window contains a table with the following columns: N, Freq, Call, Grid, El, and Age (h). The table lists 9 active stations.

N	Freq	Call	Grid	El	Age (h)
1.	1025	HB9Q	JN47	24	0.1
2.	1390	W5WP	EM00	39	0.1
3.	1415	IW5DHN	JN53	24	0.1
4.	1555	W8PAT	EN81	45	0.0
5.	1582	K7ULS	DN41	27	0.1
6.	1587	W0VB	DN74	30	0.0
7.	1625	K4PI	EM73	49	0.0
8.	1738	WB9Z	EN60	44	0.0
9.	1897	N3XX	EM73	49	0.0

# 3B9GJ Results

- (76) 6m EME Q65 Pileup Contacts
- (19) 6m TEP FT8 Contacts
- (2) 6m Direct FT8 Contacts
- (1) 6m Direct Q65 Pileup Contact



# 76 6m EME Pileup Contacts

1	JG1TSG	21	OH7KM	41	K5XI	61	W6UC
2	JA7QVI	22	ZL3NW	42	JE3GRQ	62	K6QXY
3	ZL1RS	23	N3XX	43	OH3SR	63	W7GJ
4	ZS4TX	24	K4PI	44	SM7FJE	64	AJ7LL
5	ZS6NK	25	S59A	45	OZ1DJJ	65	NJ6P
6	G8BCG	26	W9JN	46	K8CX	66	KB7Q
7	PJ4MM	27	NV9L	47	KA9CFD	67	K7KX
8	VK3DUT	28	N9IW	48	K9CT	68	KL7HBK
9	JO1PSX	29	N8RR	49	W3UUM	69	WW1L
10	JA9SJI	30	XE2OR	50	K5RK	70	K1SIX
11	VK5PJ	31	N5DG	51	NJ6D	71	WA5VGI
12	KJ9I	32	W8IW	52	W6XU	72	ES6RQ
13	W5WP	33	W8PAT	53	K6EME	73	OG2M
14	K2ZD	34	N7NW	54	WW2DX	74	HA8FK
15	W9GA	35	NU4E	55	N7IP	75	N4BAA
16	K9RX	36	N8DX	56	PC5C	76	OH2BC
17	W0GJ	37	N1DG	57	PA5Y		
18	WB9Z	38	W8UV	58	IW5DHN		
19	VK2XN	39	PY2XB	59	F1IXQ		
20	S57RR	40	N7NR	60	AA7A		

# 3B9GJ 6m Station









# What's Next?

- ZD9
- H44
- T2







**THANK YOU!**